



- AVAILABLE FOR 55'S & OVER
- VACANT POSSESSION AVAILABLE
- REQUIRING SOME INTERNAL UPGRADING
- SHOWER ROOM
- REMOTE ENTRANCE INTERCOM
- GAS CONDENSING COMBINATION BOILER
- WELL MAINTAINED MATURE COMMUNAL GARDENS
- OFF ROAD PARKING
- COUNCIL TAX BAND: B
- LEASEHOLD. GROUND RENT/SERVICE CHARGE APPROX £126 PER CALENDAR MONTH



Located in the centre of Harton Village lying on Sunderland Road, a two bedroom ground floor apartment which is located in the original house and overlooks the front garden. This property would make an ideal retirement apartment and is available to persons aged 55 and over. It does however require some internal upgrading and this fact has been reflected in the asking price and gives the prospective purchasers the opportunity of carrying out improvement works to their own style and taste.

Harton Lea is surrounded by mature communal gardens and there is off road parking within the development.

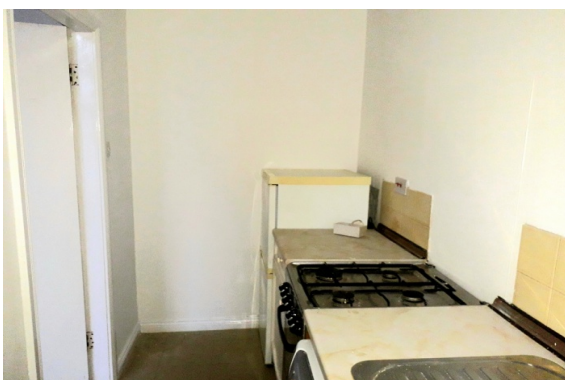
This property lies on a regular bus route to the town centre where a full range of shops and facilities may be found, local shops may be found within a short walk at the Nook.

The property benefits from the following accommodation:

ACCOMMODATION

GROUND FLOOR

COMMUNAL ENTRANCE HALL



APARTMENT

ENTRANCE HALL

With radiator, remote entrance intercom telephone, two storage cupboards, airing cupboard with fitted shelves and electric heater.

LIVING ROOM

3.95m x 3.40m plus bay window

With two radiators, t.v. aerial point.

KITCHEN

3.54m x 1.42m

With a range of fitted wall and floor units with laminated worktops and ceramic tiled surrounds, an inset stainless steel sink unit, plumbing for automatic washing machine, gas cooker point, wall mounted Baxi gas condensing combination boiler for heating the domestic hot water and central heating systems.

BEDROOM 2

1.99m x 2.79m

With radiator.

SHOWER ROOM

1.79m x 2.07m

With a shower cubicle with glazed sliding door, low level w.c. vanity unit with washbasin and cupboard below, ceramic tiled/vinyl panelled walls, chrome ladder style heated towel rail.

BEDROOM 1

4.73m x 2.31m

With double radiator, a range of fitted wardrobes.

OUTSIDE

The property is surrounded by mature communal gardens and parking.

Located in the centre of Harton Village lying on Sunderland Road, a two bedroom ground floor apartment which is located in the original house and overlooks the front garden. This property would make an ideal retirement apartment and is available to persons aged 55 and over. It does however require some internal upgrading and this fact has been reflected in the asking price and gives the prospective purchasers the opportunity of carrying out improvement works to their own style and taste.

Harton Lea is surrounded by mature communal gardens and there is off road parking within the development.

This property lies on a regular bus route to the town centre where a full range of shops and facilities may be found, local shops may be found within a short walk at the Nook.

The property benefits from the following accommodation:

ACCOMMODATION

GROUND FLOOR

COMMUNAL ENTRANCE HALL

APARTMENT

ENTRANCE HALL

With radiator, remote entrance intercom telephone, two storage cupboards, airing cupboard with fitted shelves and electric heater.

LIVING ROOM

3.95m x 3.40m plus bay window

With two radiators, t.v. aerial point.

KITCHEN

3.54m x 1.42m

With a range of fitted wall and floor units with laminated worktops and ceramic tiled surrounds, an inset stainless steel sink unit, plumbing for automatic washing machine, gas cooker point, wall mounted Baxi gas condensing combination boiler for heating the domestic hot water and central heating systems.

BEDROOM 2

1.99m x 2.79m

With radiator.

SHOWER ROOM

1.79m x 2.07m

With a shower cubicle with glazed sliding door, low level w.c. vanity unit with washbasin and cupboard below, ceramic tiled/vinyl panelled walls, chrome ladder style heated towel rail.

BEDROOM 1

4.73m x 2.31m

With double radiator, a range of fitted wardrobes.

OUTSIDE

The property is surrounded by mature communal gardens and parking.

Price: £59950

144/146 Fowler Street South Shields
Tyne & Wear
NE33 1PZ

Moody & Co
Sales: 0191 4271414
Rentals: 0191 4270335